

# C043

## Continuous Dispensing Custard Freezer



**Internal condensing system - Water-cooled**

### Features

Offer premium frozen custard, low overrun ice cream, or sorbet in three separate flavors.

### Mix Hopper

Three, 30 quart (28.4 liter). Separate hopper refrigeration (SHR) maintains mix below 41°F (5°C).

### Indicator Lights

Lights indicate when mix is low in the hopper.

### Product Chute

Ribbon of frozen product flows down chute to separate dipping cabinet. Easily removable for cleaning or moving dipping cabinet.

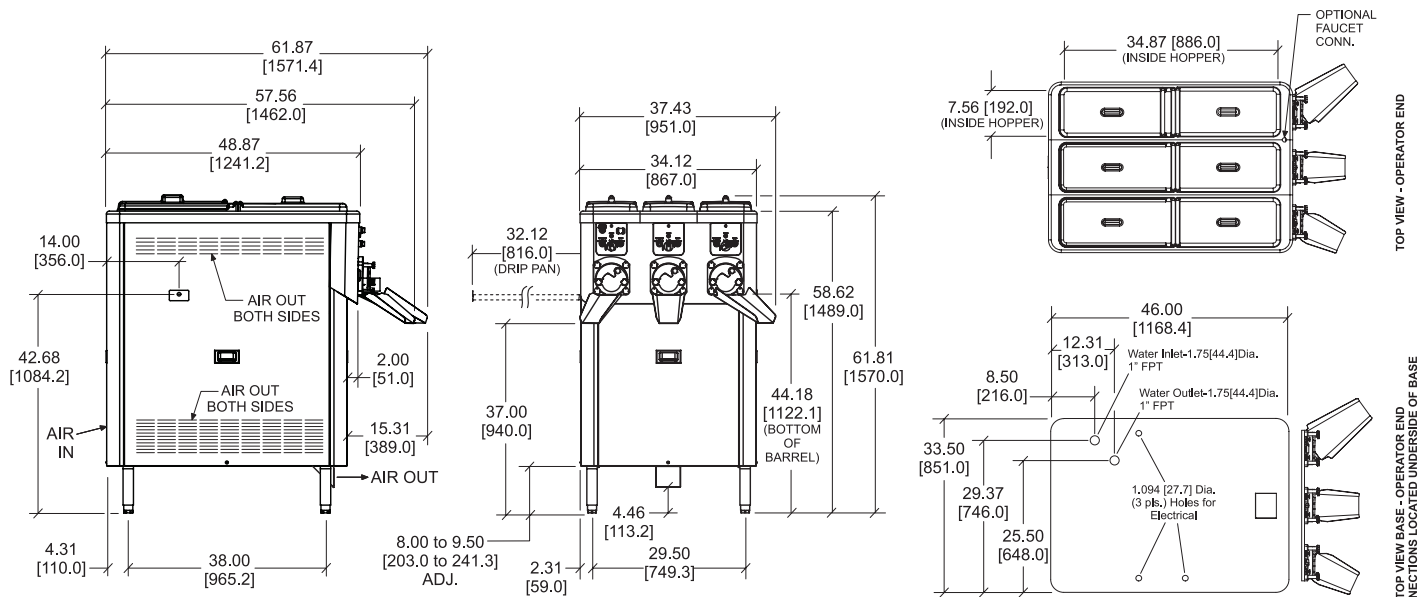
### Mix Flow Regulator

Convenient dials with easy to read markings allow operator to adjust the correct amount of mix flowing into freezing cylinder for proper consistency.

### Safety Features

To protect users from accidental injury:

- Beater motor will not rotate unless door is in place.
- Finger guards installed in opening of dispensing door.



FIGURES IN BRACKETS INDICATE MILLIMETERS / DECIMAL AND FRACTIONAL DIMENSIONS EQUAL TO ( PLUS OR MINUS 1/16 INCH [1.5mm] ).

Weights	lb.	kg
Net	1225	555.7
Crated	1373	622.8

\*For reference only

	cu. ft.	cu. m
Volume	84.8	2.40

Dimensions	in.	mm
Width	34-1/8	867
Depth	48-7/8	1242
Height	61-13/16	1570
Clearance	8 to 9-1/2 Adj.	203 to 241 Adj.

Mounted on standard legs

Electrical	Maximum Fuse Size			Minimum Circuit Ampacity			Poles (P) Wires (W)
	Left	Center	Right	Left	Center	Right	
208-230/60/3 water	25	20	20	19	16	16	3P 4W
200/50/60/3 water	25	20	20	19	16	16	3P 4W

This unit may be manufactured with other electrical characteristics and may have additional regulatory agency approvals. Consult the local Taylor distributor for other electrical characteristics and agency approvals based on specific electrical and country requirements.

(For exact electrical information, approval marks, and refrigerant, always refer to the data label of the unit.)

**Continuing research results in steady improvements. Therefore, these specifications are subject to change without notice.**

**Bidding Specs**

Electrical: Volt \_\_\_\_\_ Hz \_\_\_\_\_ ph \_\_\_\_\_  
 Neutral: Yes No      Cooling: Air Water NA

**Options:**

All options may not be available in combination with others or with all electrical or cooling configurations. Please consult your local Taylor distributor.

**Authorized Taylor Distributor**

**Specifications**

**Electrical**

Three dedicated electrical connections are required. See the electrical chart for the proper electrical requirements. Dispensing electrical connections may be permanently connected. Consult your local Taylor distributor for cord and receptacle specifications as local codes allow.

**Beater Motor**

Three, 2.0 hp.

**Water-Cooled Refrigeration System**

Three / 1 in. FPT Connections / 10,000 BTU/hr. / R449A (BTUs may vary depending on compressor used.)

**Separate Hopper Air-Cooled Refrigeration**

One, 1,000 BTU/hr. R134A (BTUs may vary depending on compressor used.)

**Clearance**

Minimum Clearance of 3 in. (76 mm) on both sides and rear. Drip pan can be installed on either side. Allow 36 in. (914 mm) on the side drip pan is installed. Allow 36 in. (914 mm) in the rear for service access.

**Options**

- Dipping Cabinet (Consult your local Taylor distributor)
- Dipping Well (Consult your local Taylor distributor)
- Faucet



750 N. Blackhawk Blvd.  
 Rockton, Illinois 61072  
 www.taylor-company.com